

ICDAS Revit Bridge Family Libraries

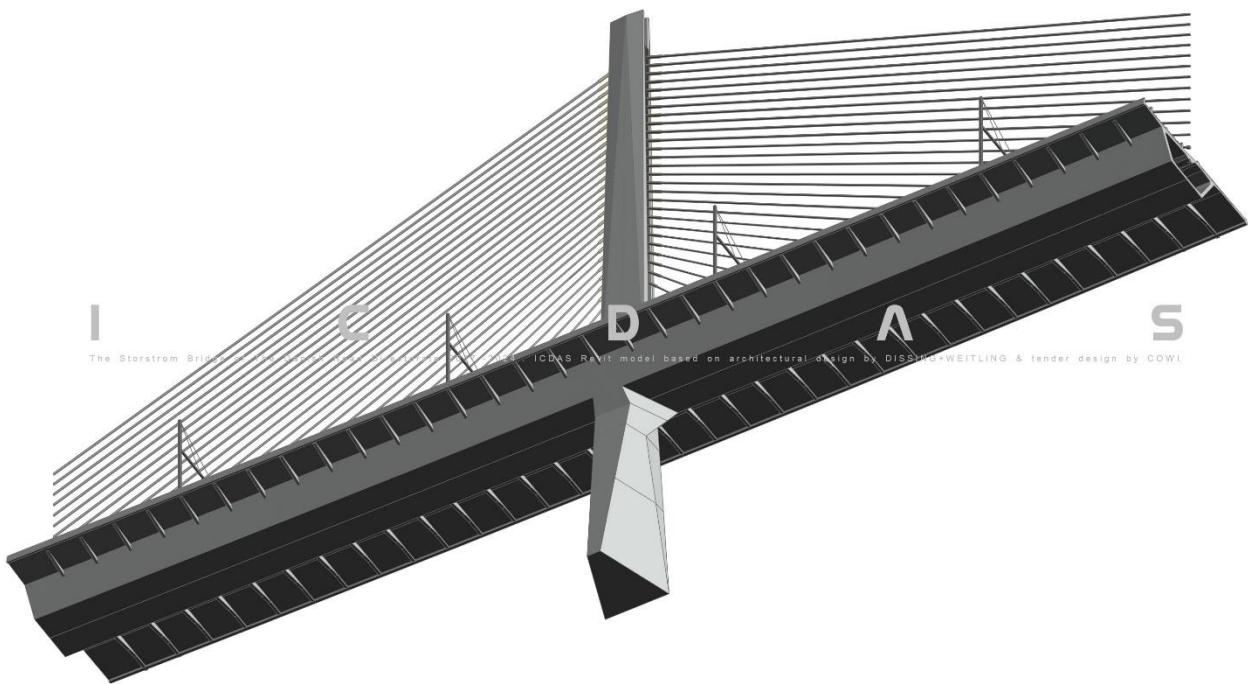
2019.00

Incl. Civil Structures Family **REX 2017**



ICDAS

2018
2017
2016
2015
2014
2013



Dear users

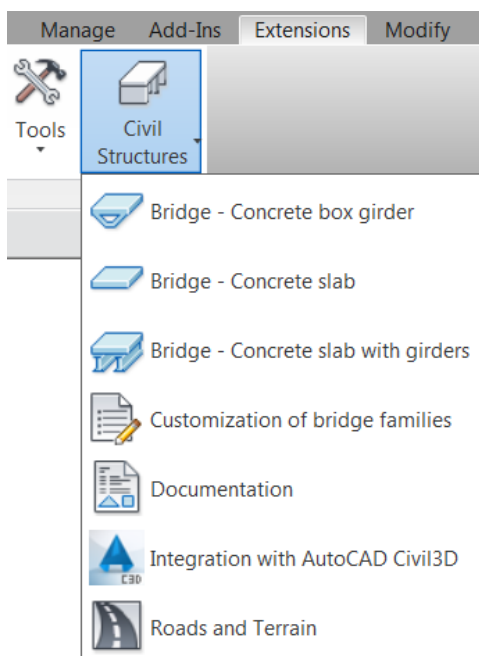
Welcome to ICDAS Revit family for bridge components.

This manual outlines figures of Revit family files from ICDAS and over 90 files from Civil Structures 2017. There are more than 160 figures in 3D View, Elevation View, Plan View including parametric dimensions and instructions on how to change it. All Revit family files are installed in [ICDAS LIBRARIES](#) in working folder C:\ICDAS\ICDAS_BRIDGES\1.REVIT.

ICDAS family files are automated from ICDAS addin in Revit, some have additional manual modifications hereby. The users can create family files similarly and add to the libraries for use in the next projects. ICDAS BRIDGES apply both of automatic model creation and manual modifications for Revit BIM model. Automatic model creation gives you also FEM model, at least the most of important works. Manual modification and creation free your focus on numerical input and let you design with family files freely. Revit family files can be used in the following options:

- > Option 1, as load family files into project file (or other family file) having the main model automated from ICDAS BRIDGES using Excel input
- > Option 2, as customize family files being use in Revit Civil Structures in integration with AutoCAD Civil 3D (for any alignment)
- > Option 3, as option 1 but the main model is created from Dynamo.

From ICDAS COB 2018.02, the Option1 automate also bridge deck in any alignment through reading XYZ-Points of alignment created from AutoCAD Civil 3D. Note that all concrete objects in Option 1 can host rebar.



For Option 2, once Civil Structures have been installed, a dropdown in Revit Extensions tab is as shown to the left. **Civil Structures 2017 is the latest Autodesk addin, pt. 03-03-2018.** The users need to create first the bridge in Revit 2017 (and Civil 3D 2017) then save and open file in Revit 2018 for working with ICDAS 2018.

Note that concrete deck created in Civil Structures does not host rebar as 'In-Place Mass Family' has been used for the deck.

The basic Civil Structures family files are unchanged from 2014 to 2017 but Civil Structures addin must be installed in compatible with the year of Revit, at least because of locations of the family files in C:\Users* \2015*, *\2016*, *\2017*.

All family files from Civil Structures 2017 are installed in an ICDAS subscription of bridge, the case the users will not use Civil Structures automation but want the family files employed in Option 1 & 3 (of only 36MB for all metric family files in Civil Structures 2017).

ICDAS staff, 03-03-2018

Contents

Please register a subscription for the full contents of manual.